

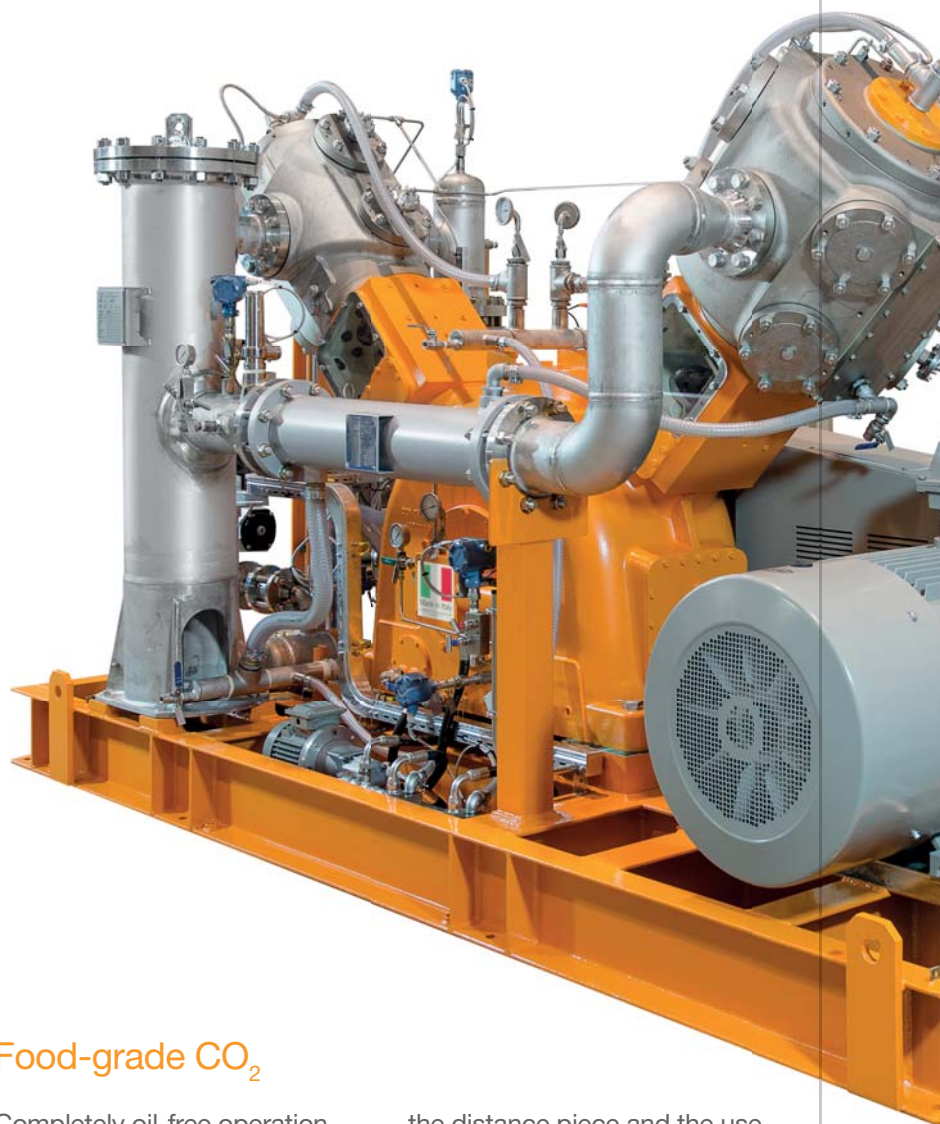
Wet CO₂ Compressor: new design, featuring efficiency and innovation

Wet CO₂ and its recovery will put any compression system under stress: the problems arising due to the presence of water need to be addressed in a specific way in order to avoid risks of corrosion or wear.

For this reason, thanks to its long experience, SIAD Macchine Impianti has developed a new product to ensure all the quality standards of the gas, while maintaining high performance. The innovative design offers cross-efficiency:

- specific with respect to the problems of wet CO₂;
- general for the operation of each individual compressor.

Efficiency ensuring high reliability of the system, its durability and minimizing consumption.



Specific food-grade CO₂ distance piece

Food-grade CO₂

Completely oil-free operation results in a significant improvement in the purity of the gas, thanks to the design of

the distance piece and the use of specific materials for food-grade CO₂ application.

Applications

- Food & Beverage
- Biogas
- Ammonia
- Hydrogen
- Wellhead
- Ethanol
- Combustion
- Dry ice
- Chemicals
- Gas Treatment

An evolved technical background

SIAD Macchine Impianti has applied all its technical expertise to identify the main factors that increase the lifetime of the machine and reduce consumption. The following interventions increase the service life of the system and the MTBM (Mean Time Between Maintenance):

- optimized balancing of compressor masses to reduce

vibration, with consequent increased life of the components;

- low piston linear velocity, ensuring longer life of the seals;
- layout optimization with linearization of the piping and the use of wider pipes, to obtain low gas circulation speed. This is essential in order to reduce pressure losses and favor separation of the condensate,

for more efficient operation and reduced consumption;

- ad hoc design in accordance with the principles of operation and maintenance ergonomics, in addition to being fully automated for remote operation.

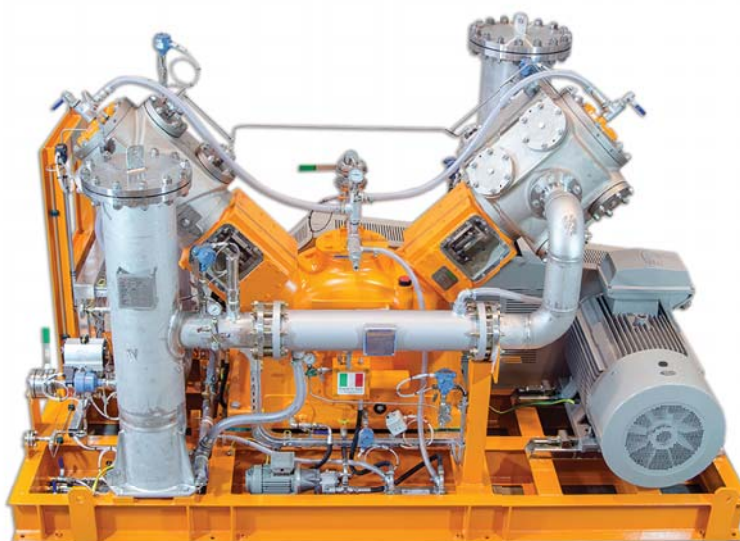
Highlights

Lower maintenance costs

Minimized plant downtime thanks to the redesign of the compressor with perfect balancing of the components, hence less wear.

Energy saving

Optimized fluid dynamics with a significant reduction in energy consumption compared to the previous compressor model.



Model	Capacity kg/h	Intel pressures bar (a)	Delivery pressure bar (a)	Number of compression stages
TS2-2	150	atmospheric	19	2
WS1-2	250	atmospheric	19	2
WS2-2	650	atmospheric	19	2
MS2-2	1 100	atmospheric	19	2
MS2-2	2 100	atmospheric	19	2

Typical sizes of CO₂ compressors - Other models available on request

Discover our services
www.siadmi.com

For information
siadmi_compr@siad.eu



© 2015 SIAD Macchine Impianti S.p.A.
All rights reserved

The information contained herein is offered for use by technically qualified personnel at their discretion and risk without warranty of any kind. We regularly update our data.

Printed in Italy
361uk12/15



SIAD Macchine Impianti S.p.A.
Società unipersonale soggetta all'attività di direzione e coordinamento di SIAD S.p.A.
24126 Bergamo, Italy - Via Canovine, 2/4
Share Capital € 25.000.000 paid up
VAT and Fiscal Nr.: (IT) 00228420162
R.E.A. BG-72619 - Export: BG 006107

Telephone +39 035 327611
Fax +39 035 316131

www.siadmi.com - siadmi@siad.eu